



ROBUPAC Collapsible Containers

The intelligent twin-sheet system

Extreme durability, completely modular design, noticeable cost savings: these are the distinguishing features of the ROBUPAC collapsible container system. They are ideally suited for all shipping and storage tasks which require extreme ruggedness and minimal weight. When shipped or stored empty, the folding sleeve facilitates reduced volume, thus saving additional storage and transportation costs.

Extreme durability, completely modular design.



System Design

Ideal packing density that reliably protects goods

ROBUPAC collapsible containers are optimal for shipping extremely heavy weight goods. Their twin sheet technology makes them extremely robust at an incomparably improved strength to weight ratio. They allow for an ideal packing density and reliably protect shipped goods against damage.

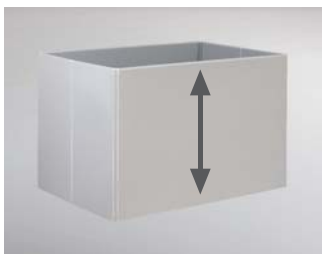
When shipped or stored empty, the plastic sleeve is simply stowed between the base and the cover. This results in an efficient volume reduction of up to 80%. Sturdy materials and construction make ROBUPAC collapsible containers appropriate for a multitude of uses, help them withstand high mechanical impacts and extreme thermal conditions making them suitable for rugged industrial use.

For more information on ROBUPAC collapsible containers, visit our website at: www.infinex-group.ca

System Advantages

ROBUPAC collapsible container system represent decades of experience in the development of collapsible containers. Every detail of the system is precisely tailored to the needs of modern logistics processes. ROBUPAC collapsible containers offer numerous practical features such as a flat base replaceable pallet feet and runners, innovative floor locking and many additional options.

- Cost-effective procurement
- Extremely robust, reliable protection for shipped goods
- Light weight
- Flat base, no recesses
- Replaceable pallet feet
- Optional pallet runners, replaceable
- Can be equipped with integrated
- "QuickLock" floor and cover locking
- Suitable for high rack and roller conveyor systems (with runners)
- Cost savings through efficient packing density and volume reduction when stored empty
- Optimal UV, moisture and rot resistance
- Easy to use, long life and durability
- Cost savings based on high circulation
- Available as ESD-proof version



Variable heights



Welded edges



Removal flaps



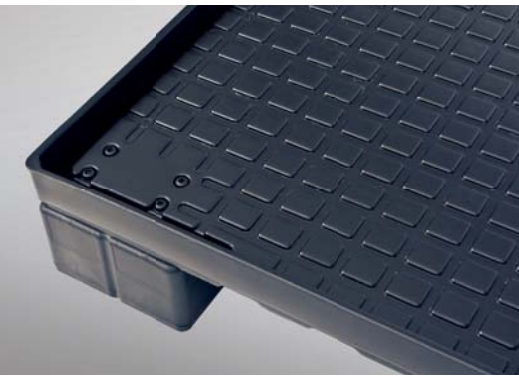
Card pockets



Labeling



Bottom inserts



Flat Pallet Base

The pallet base is designed with a flat, closed pallet deck without footholes, so that no cargo will slip in hollow cavities. This eliminates costly bottom inserts, improves the cleanliness of the pallets and facilitates easy maintenance.



Replaceable Pallet Feet

The pallet feet can be individually replaced, so that if damage occurs, you don't have to replace the entire pallet base, but simply screw on new feet. The feet are equipped with recesses for barcodes or other labeling. Thanks to the recessed surfaces, the labels will not be damaged even if the pallet feet rub against each other during transport, for example.



Smart Pallet Design

The twin-sheet pallet is designed so that the feet do not have any molding angles so that when the pallet is stacked, the feet are positioned on the outer corners of the system below. The weight is thus not stacked on the cover, but distributed over the corners of the sleeve. This ensures high stability and stacking safety. The straight feet also ensure that modern warehousing technology can grasp the pallets cleanly and prevent stoppages in conveying systems.



Convenient Cover

The stable twin sheet cover is designed to prevent the accumulation of water. This increases ease of use, particularly when covers wet from rain are removed. Due to the integrated recesses, quadruple banding is possible, which increases shipping safety.

Folding Sleeve

Thanks to the structured core panel technology, the container sleeve is extremely stable with a high load capacity, and is very lightweight. The folding sleeve can be stored between the base and the cover to reduce volume. Furthermore, the sleeve can be equipped with numerous custom options.



Modular Foot Caps

The pallet feet can be capped from the bottom; these caps can be replaced individually when worn, so that it is not necessary to replace the entire foot. The foot caps prevent protruding objects or uneven surfaces from sticking in the foot cavities and improve sliding properties.



Replaceable Pallet Runners

ROBUPAC systems are also available with pallet runners. Like the pallet feet, the runners can be individually replaced when damaged or worn. The ROBUPAC systems equipped with runners are suitable for use in high rack and roller belt systems.



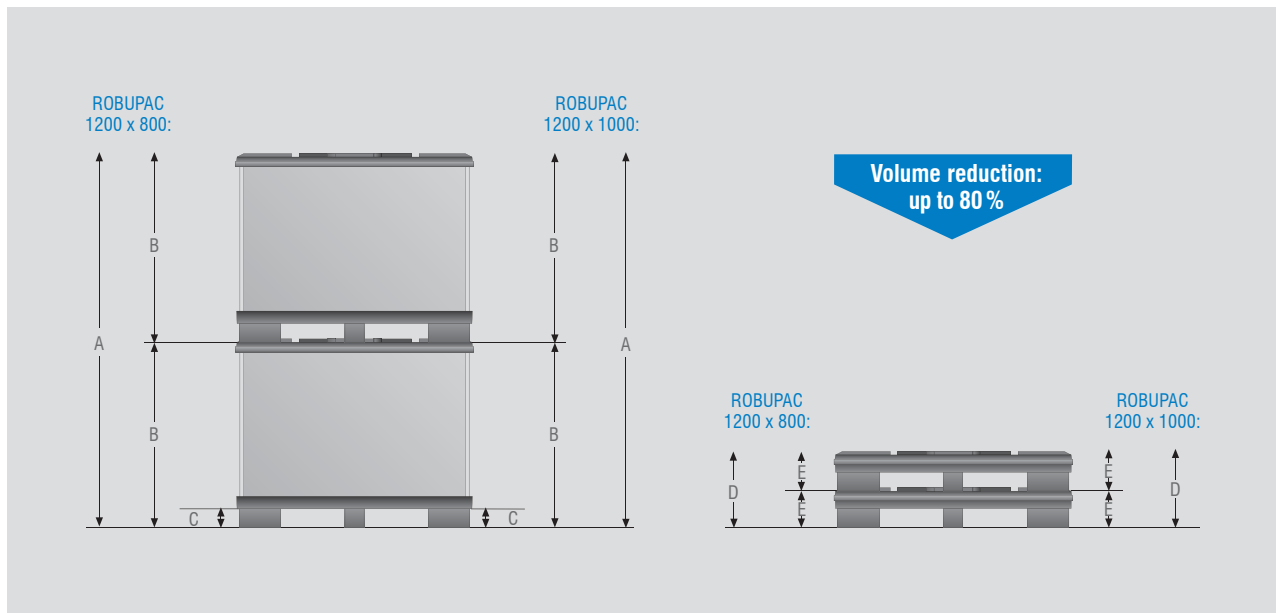
Innovative Floor Locking

Optionally, ROBUPACs can be equipped with the new "QuickLock" locking system. In contrast to conventional locking devices, this system offers important advantages like significantly simpler operation as well as reduced hazard of injury. Further more, it is recognizable at first sight whether the locking device is open or closed, thus increasing transportation security. Since this locking system is not integrated into the pallet itself nor into the cover but into the sleeve, penetration of water is prevented.



Technical Data (Standard Design)

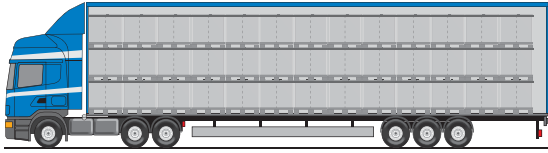
	ROBUPAC 1200 x 800	ROBUPAC 1200 x 1000
Dimensions when assembled (L / W / H):	47.83 x 32.09 x 35.43 in / 1,215 x 815 x 900 mm	48.03 x 40.95 x 44.30 in / 1,220 x 1,040 x 1,125 mm
Dimensions when collapsed (L / W / H):*	47.83 x 32.09 x 9.25 in / 1,215 x 815 x 235 mm	48.03 x 40.95 x 8.86 in / 1,220 x 1,040 x 225 mm
Inner dimensions (L / W / H):	45.08 x 29.33 x 27.76 in / 1,145 x 745 x 705 mm	46.06 x 38.39 x 37.20 in / 1,170 x 975 x 945 mm
Content:	approx. 600 litres	approx. 1080 litres
Tare weight:	approx. 30 kg	approx. 32 kg
Net load capacity / stackability:	500 kg / 2-x	
Volume reduction:	approx. 75 %	approx. 80 %
Base and Cover:	Polyethylene HDPE, black	
Sleeve:	Polypropylene structured-core panel, thickness: approx. 0.39 in / 10 mm, grey (similar to RAL 7001)	



	ROBUPAC 1200 x 800*	ROBUPAC 1200 x 1000*
A:	70.87 in / 1800 mm (0.79 in / 20 mm for nesting)	89 in / 2235 mm (0.59 in / 15 mm for nesting)
B:	35.43 in / 900 mm	44.29 in / 1125 mm
C:	3.94 in / 100 mm	3.94 in / 100 mm
D:	17.72 in / 450 mm (0.79 in / 20 mm for nesting)	17.13 in / 435 mm (0.59 in / 15 mm for nesting)
E:	9.25 in / 235 mm	8.86 in / 225 mm

* In models with pallet runners or with foot caps, the outer dimensions (height) increase by 0.39 in / 10 mm

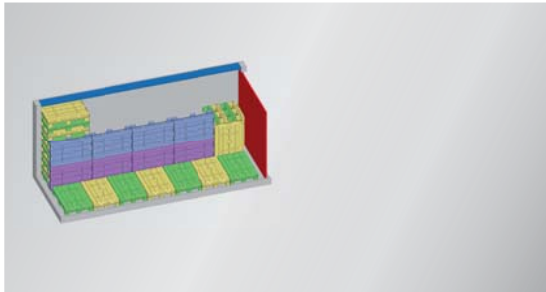
Loading Examples ROBUPAC 1200 x 800



Transport to destination (mega trailer):
78 fully loaded ROBUPAC systems (1200 x 800)

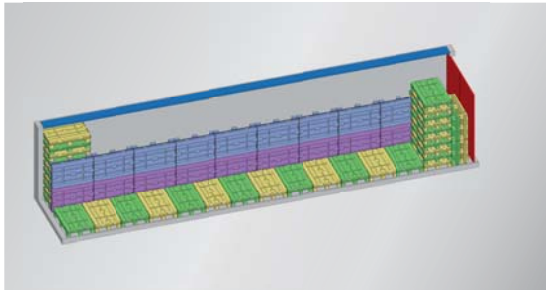


Return shipping (mega trailer): 78 empty ROBUPAC systems
(1200 x 800) on approx. 3 loading meters



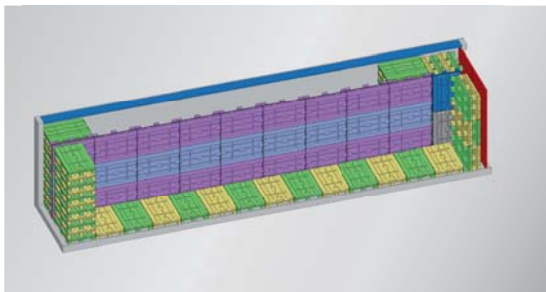
20 ft Container: 123 containers

11 stacks with 10 ROBUPAC each,
8 ROBUPAC between stacks,
and 5 ROBUPAC at the door



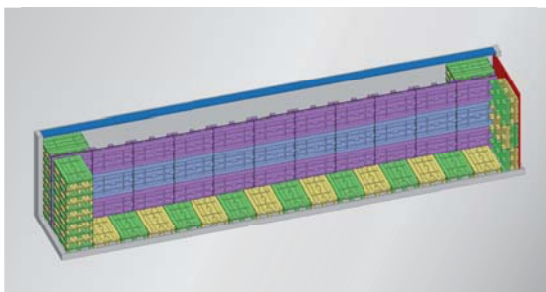
40 ft Container: 257 containers

23 stacks with 10 ROBUPAC each,
18 ROBUPAC between stacks,
and 9 ROBUPAC at the door



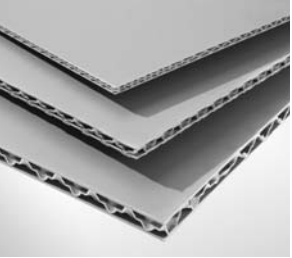
40 ft High Cube Container: 296 containers

23 stacks with 11 ROBUPAC each,
9 stacks with 3 ROBUPAC each,
and 16 ROBUPAC at the door



45 ft High Cube Container: 336 containers

27 stacks with 11 ROBUPAC each,
11 stacks with 3 ROBUPAC each,
and 6 ROBUPAC at the door



Our Promise

At Infinex, we focus on coming up with new, innovative ideas – always thinking about tomorrow's requirements. In looking for new ways to solve your problems, we are not afraid to "think out of the box", we rely on imagination for uncommon solutions along and on our courage to try out unconventional ideas. By keeping our eyes open and our desire for learning alive, we break through barriers and set new standards. True to our roots as a family-owned company, we listen exactly to what you have to say and attach utmost importance to fairness in our business relationships. At Infinex, our employees, customers and suppliers are wholeheartedly committed and work together as partners.

Infinex North America Corp.

2300 Yonge St. Suite 1600
Toronto, Ontario Canada - M4P 1E4
Telephone: +1-866-901-9528
info@infinex-group.ca
www.infinex-group.ca

